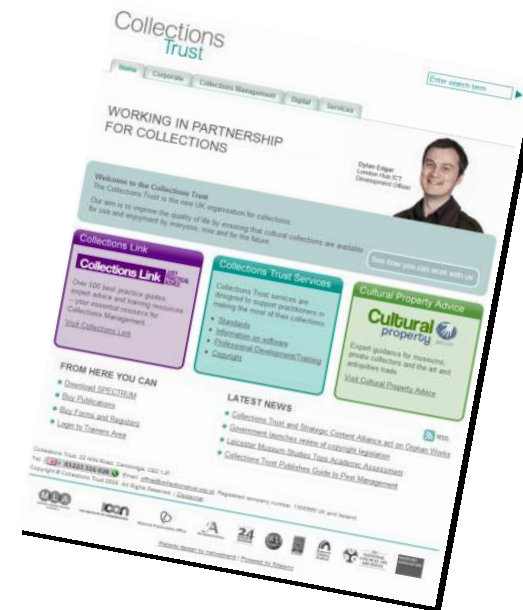


# SPECTRUM 4.0 - prozessorientiert

Nick Poole, CEO, Collections Trust

# Introducing Collections Trust

- Support museums, archives, libraries and galleries in unlocking the potential of their collections, by:
  - Providing know-how
  - Developing and promoting excellence
  - Challenging existing practices
  - Pioneering new ideas
  - Bringing experts together



# Our work

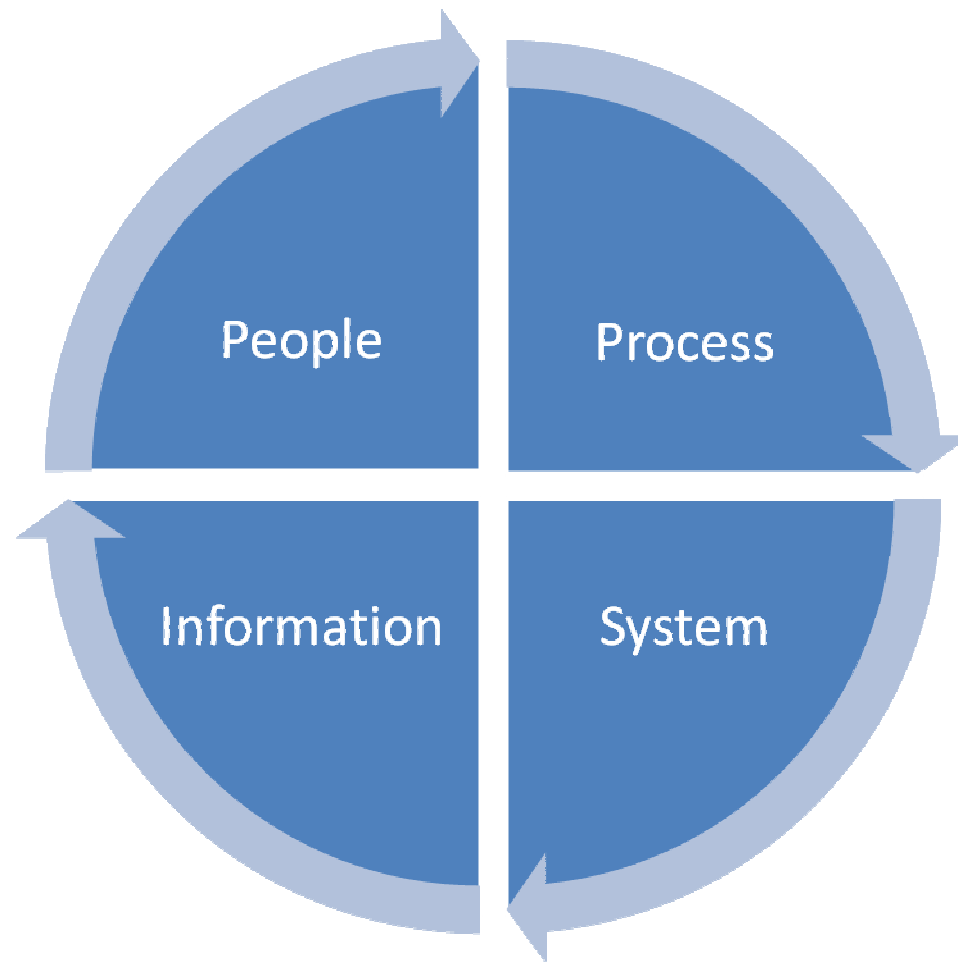
- 5 Programmes:
  - OpenCulture
  - Collections Link
  - Culture Grid
  - Excellence in Collections
  - International



# Conceptual framework

- In some ways, museum collections are unique
- At a process level they share much in common with other industries
- Our aim is to help museums become more efficient, more sustainable and to support them in increasing their impact for users
- Drawing on:
  - Supply chain logistics
  - Digital Asset Management
  - Business Process Analysis
  - Knowledge Management

## Conceptual model of an organisation



People use systems to implement processes which generate information.

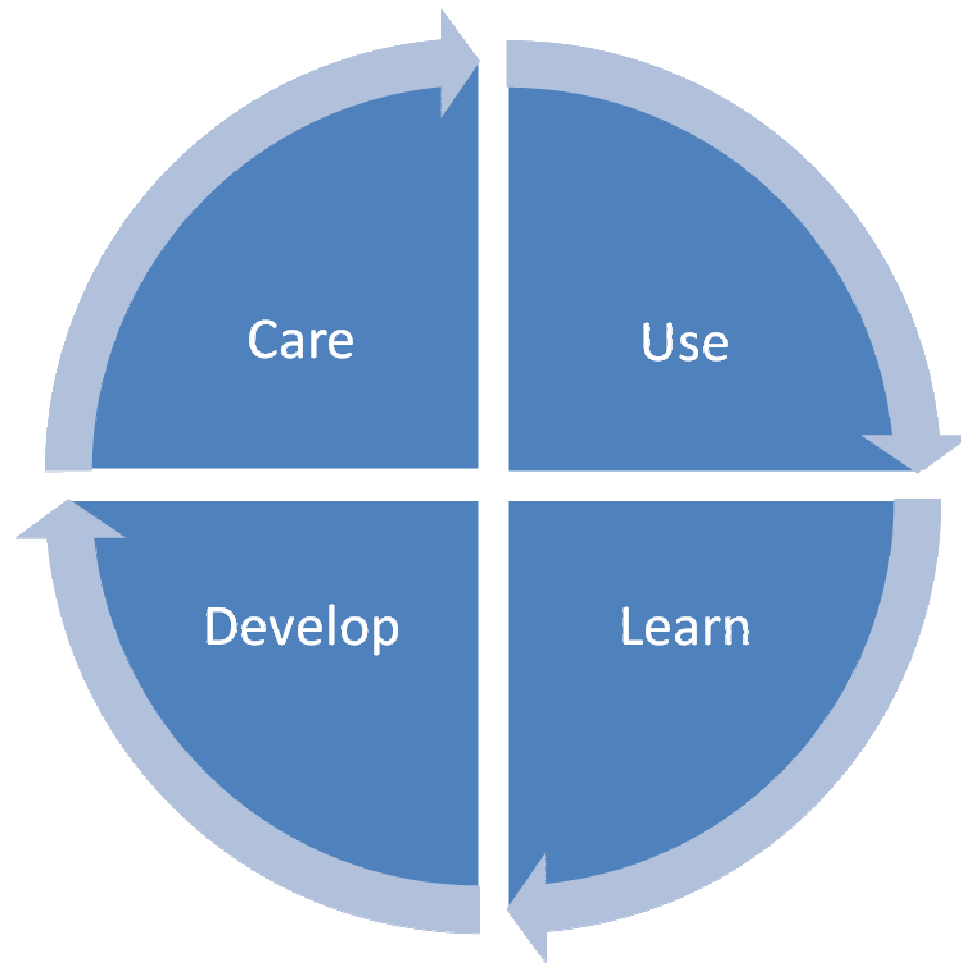
It is an holistic view – each of these elements acts on the other.

Efficiency comes when they exist in balance.

Value comes when they are motivated towards an external purpose.

Sustainability comes when they can adapt in response to emergent needs.

## Conceptual model of museum functions



Museums have traditionally been presented as a balance between access and preservation.

This misses both the emergent/dynamic nature of what we do, and the intellectual capital which is generated.

Cultural value emerges from the interaction of caring for material, acquiring and developing collections, promoting their use and developing new knowledge from them.

# Supporting improvement

- Most of our work is geared towards:
  - Helping museums maximise the benefit of the interaction between their people, their processes, their systems and their data and
  - Helping them maximise the benefit of the interaction between the integrated functions of caring for collections, learning from them, developing them and promoting their use
- And then connecting these things so that the organisational structures directly support and promote the museological functions.

# Strategic Planning

- Structure and business functions do not lead to success – success is achieved through vision and strategic planning
  - Every museum should have a Mission – a statement of the change it is seeking to achieve
  - Every museum should have a Strategic Plan – a statement of how the museum will use its assets and resources to achieve the Mission
  - Every museum should have a Collecting Policy – a statement of how its collecting activity will contribute to achieving the Mission



# Putting it together



## Putting it together

Users

Politics

Funding

Culture

## Putting it together

Users

Politics

Funding

Culture

Organisation's Mission Statement

## Putting it together

Users

Politics

Funding

Culture

Organisation's Mission Statement

Collections Management Policy

## Putting it together

Users

Politics

Funding

Culture

Organisation's Mission Statement

Collections Management Policy

Care

Use

Learn

Develop

## Putting it together

Users

Politics

Funding

Culture

Organisation's Mission Statement

Collections Management Policy

Care

Use

Learn

Develop

People

Processes

Systems

Info

## Putting it together



## Putting it together

Users

Politics

Funding

Culture

Organisation's Mission Statement

Collections Management Policy

Care

Use

Learn

Develop

People

Processes

Systems

Info

Evaluation & improvement

Rich, meaningful experiences for users



# The 10 key challenges

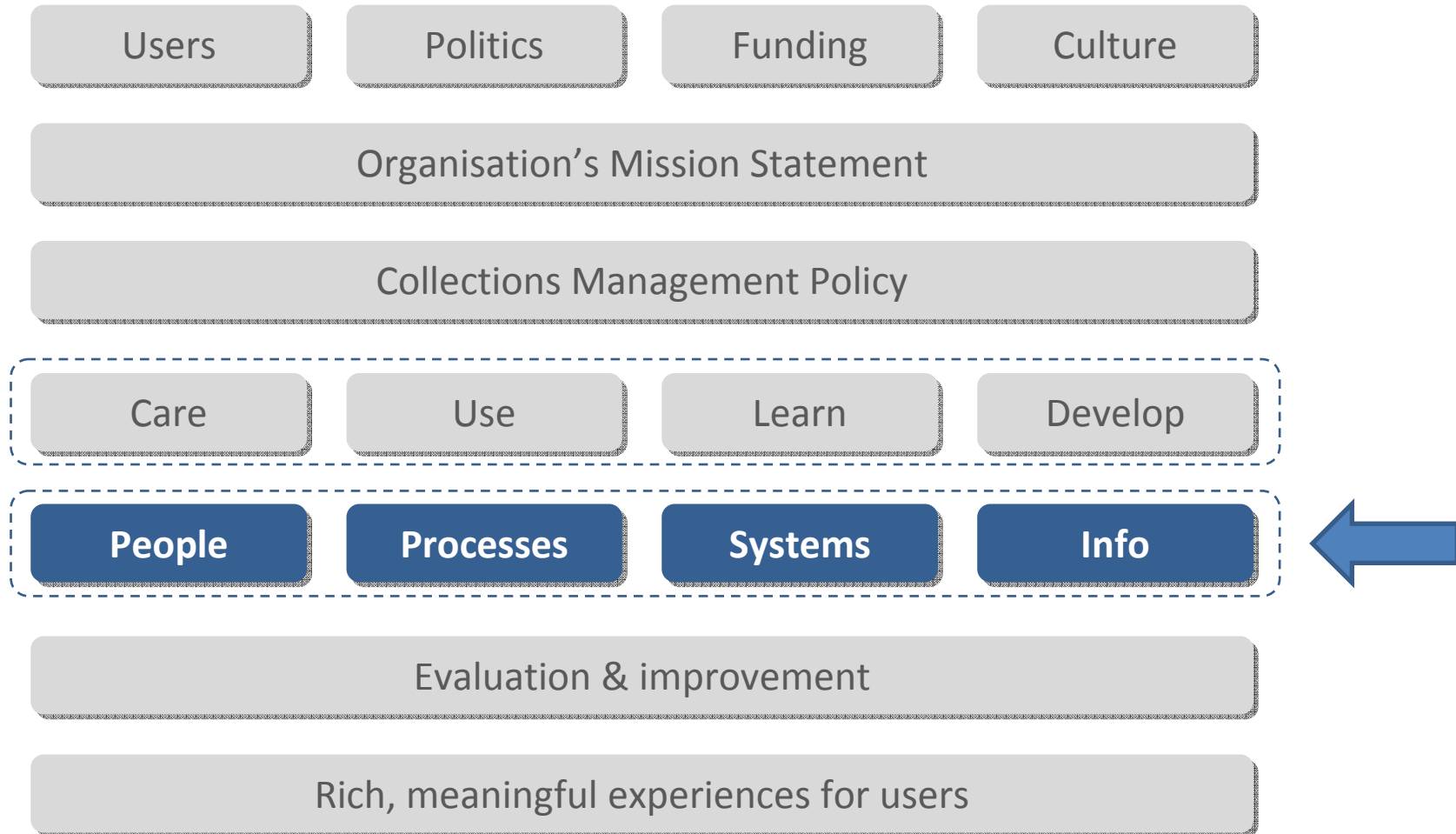
1. Enabling as many people as possible to enjoy their right to culture
  2. Ensuring that knowledge is managed and used as an asset
  3. Supporting collaboration and shared services
  4. Supporting long-term strategic development and planning
  5. Minimising the environmental costs of delivery
  6. Promoting greater use and mobility of collections
  7. Embracing the digital opportunity
  8. Developing sustainable approaches to risk
  9. Balancing costs and improving efficiency
  10. Being flexible and responding to change
- Our new standards must **enable** rather than inhibit these requirements for museums

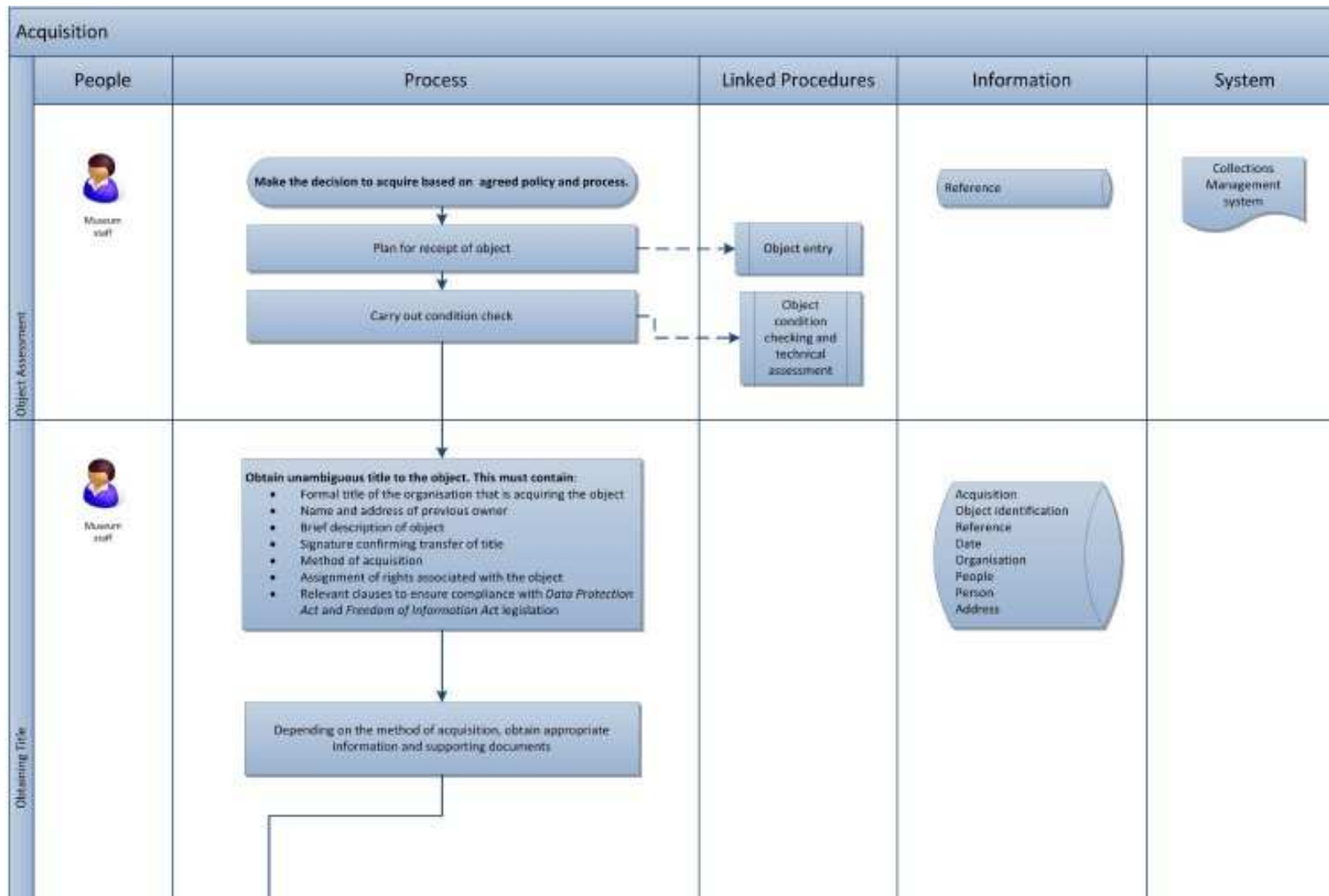


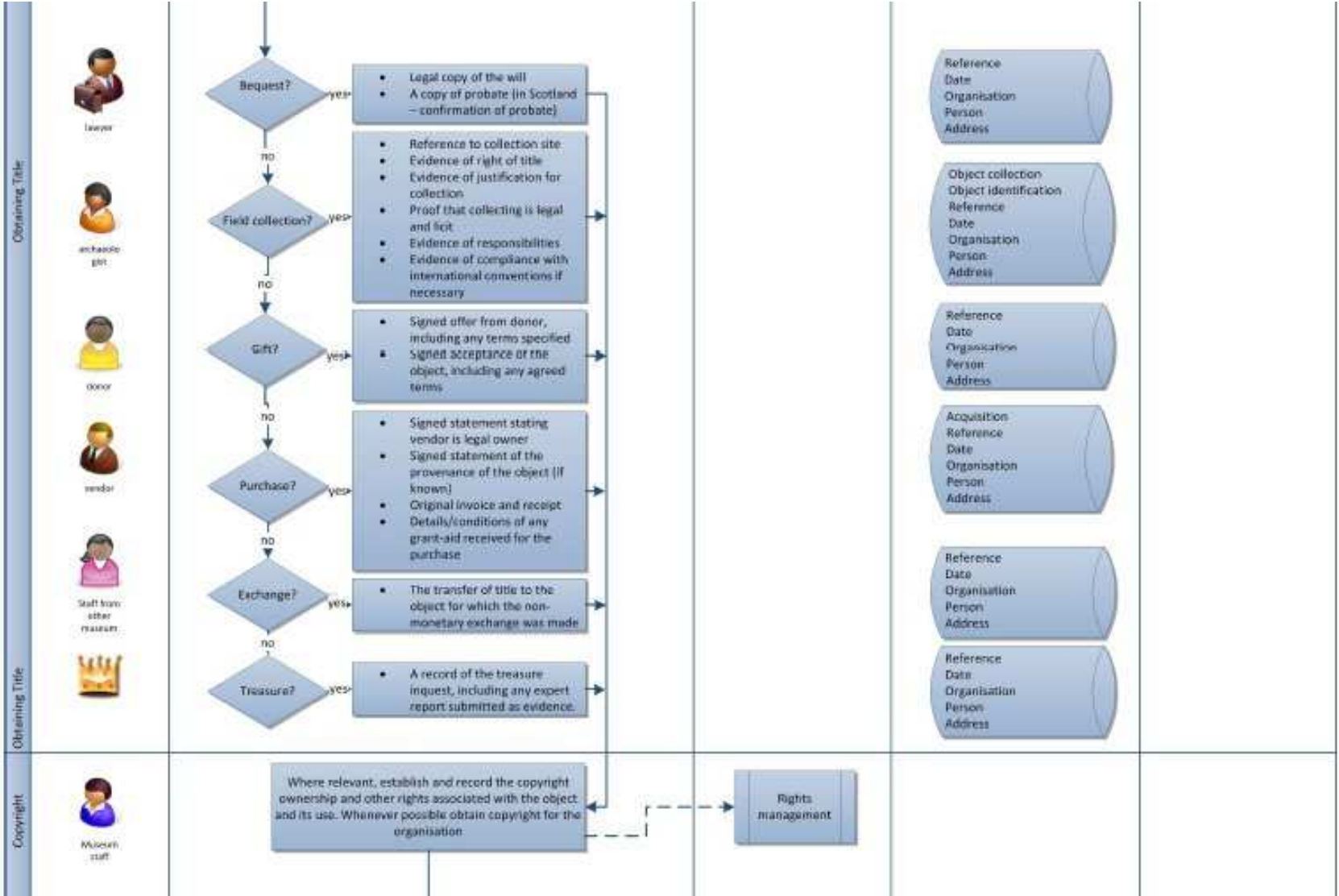
# SPECTRUM 4.0

- Not really a Standard
- It's a set of workflows for museums to use to review and refine their own procedures
- As much about the point of intersection *between* Procedures as it is the flow of the procedures themselves
- Modelled around the concepts of people, processes, systems, information.
- Critically, the Procedures haven't changed, but the way of interacting with them has

Putting it together







The screenshot shows the homepage of the Collections Link Standards Wiki. At the top right, there is a 'Log in / create account' link. Below the header, there are tabs for 'page', 'discussion', 'view source', and 'history'. The main heading is 'Collections Link Standards wiki'. A welcome message follows: 'Welcome to the Collections Link Standards Wiki. This wiki provides a platform for collections management standards and tools, and gives you, the collections management practitioner, an opportunity to share your comments with colleagues as new texts develop. Two collections management publications are currently under review.' Two publications are listed in dashed boxes: 'SPECTRUM: the UK Museum Documentation standard, version 3.2' and 'Benchmarks in Collection Care for Museums, Archives and Libraries, 2002'. A paragraph explains that these are due to be published on Collections Link at the end of March 2011. It provides directions to 'SPECTRUM Development pages' and 'Benchmarks Development pages'. A section titled 'Before using this wiki we suggest that you:' lists two items: 'Read the Using the Collections Link Standards Wiki pages' and 'Read the Collections Link Standards Wiki FAQs'. The footer of the page includes the text: 'The SPECTRUM and Benchmarks projects are managed by the Collections Trust and funded by Museums, Libraries and Archives Council Alex Dawson, Programme Manager: Standards for the Collections Trust is managing both projects alex@collectionstrust.org.uk'. At the very bottom, there is a footer with modification and access statistics, links for 'Privacy policy', 'About Collections Link Standards Wiki', and 'Disclaimers', and a 'Powered by MediaWiki' logo.

<http://standards.collectionstrust.org.uk>



**CULTURE GRID Vocabulary Bank**

Home Browse Search Register Log In

Location: Home

### About Lexaurus

Culture Grid Vocabulary Bank is a joint venture between [Collections Trust](#) and [Vocabulary Management Group](#). The bank enables users to browse, search and download a wide range of controlled vocabularies, thesauri and terminologies. There is an alerting function which provides details of changes to vocabularies in [RSS](#) and [ATOM](#) formats and a machine to machine interface accessible via a [REST API](#).

Cultural Sector organisations that wish to have their vocabularies hosted on the Culture Grid Vocabulary Bank should contact Collections Trust in the first instance.

In addition to the hosting of vocabularies, we can also provide a fully featured [editor](#) which can be used to create and edit vocabularies. This can be used as a stand alone tool or be tightly integrated with Culture Grid Vocabulary Bank.

The Vocabulary Bank is designed to complement the core [Culture Grid](#) service, giving organisations the opportunity of using the APIs to provide a crosswalk between vocabularies used within the grid metadata and other controlled vocabularies in a seamless manner.

Please read the [Terms And Conditions](#) to find out more about the conditions for using this service

### Latest Updates

[The UK Archival Thesaurus](#)  
Updated By System Administrator | 11 Jun 2010 12:27:17 BST

Vocabulary imported [14,068 terms]

Copyright © Vocabulary Management Group Powered by Lexaurus 4.5.16

<http://www.vocman.com/cultureGrid>

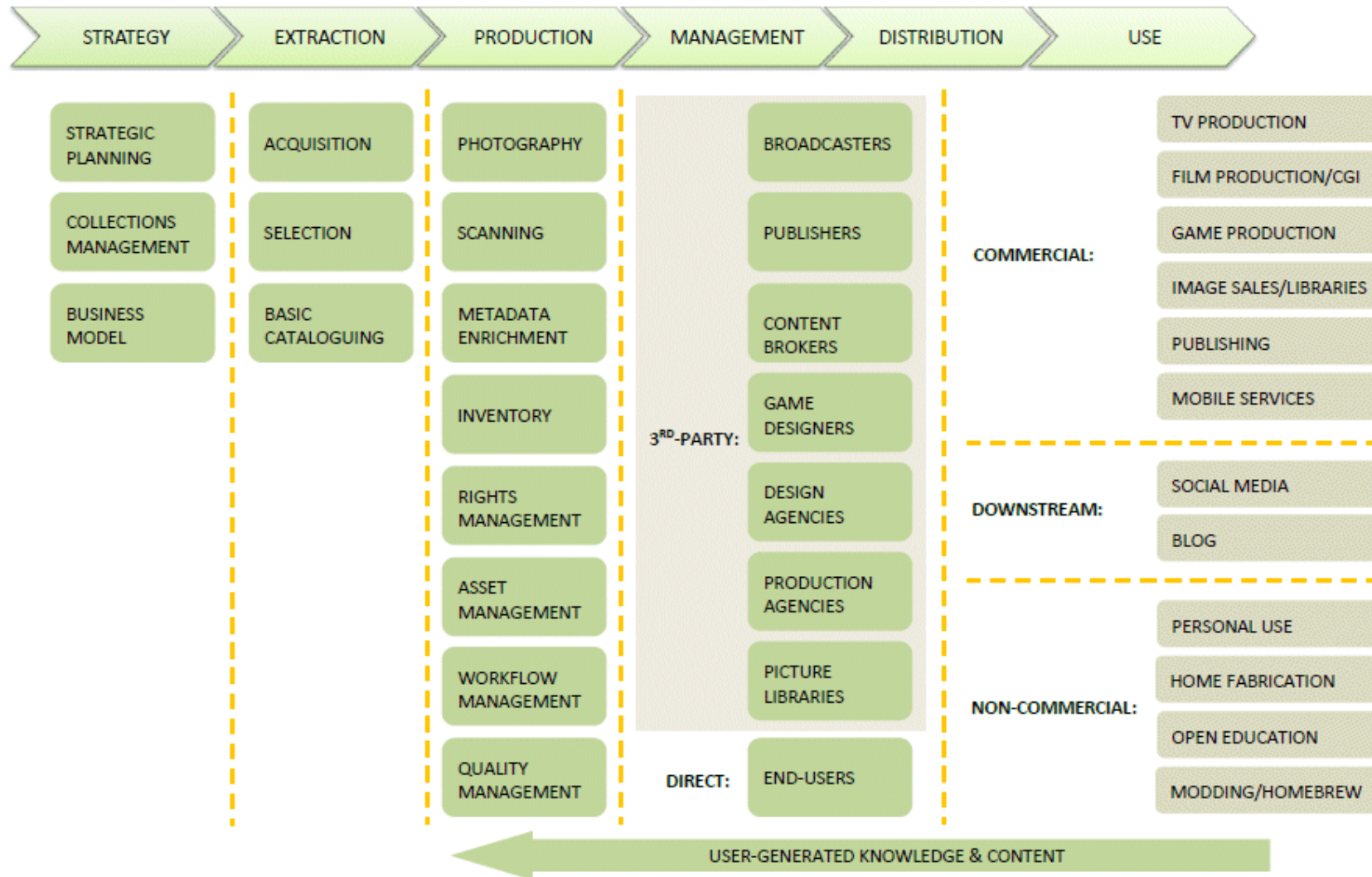


# The future for SPECTRUM

- Roadmap to be agreed at OpenCulture 2011 conference
- Localised/translated versions in Germany, Netherlands, Flanders
- Also teams in Switzerland, Croatia, South Africa
- New training tools & guidelines on Collections Link
- Expanding to incorporate new workflows for Digital Photography & Digitisation
- Thinking about Business Process Automation
- Thinking about systems integration



## 2. A Supply-Chain Model for Digital Cultural Content



# Future challenges

- New procedures:
  - Photography/digitisation
  - Digital Preservation
  - Risk Management
- Systems integration
- Cloud
- Openness
- Social contract and UGC

# OpenCulture 2011

- Annual Great Collections Management Exhibition and Conference
- Opportunity to meet with TMS
- Seminars on the New Museum Accreditation Scheme
- Meeting on the 3-5yr Roadmap for Standards
- Speakers from the National institutions, Google Art Project, BBC, Europeana and others
- [www.openculture2011.org.uk](http://www.openculture2011.org.uk)



# Contact

Nick Poole  
Collections Trust

[nick@collectionstrust.org.uk](mailto:nick@collectionstrust.org.uk)

@NickPoole1

<http://www.collectionstrust.org.uk>